

Trimble® 4D Control – Version 5.0

Server

Installation Guide



Trimble Inc. - Documentation



Table of Contents

- 1 Introduction
 - 1.1 Installation Prerequisites
 - 1.1.1 Windows Updates and User Rights
 - 1.1.2 Microsoft SQL Server
 - 1.2 General Overview
 - 2 Installation Instructions
 - 3 Advanced Server Setup (optional)
 - 4 Further reading
 - 4.1 Installation Guides
 - 4.2 Help Manuals
- Legal Notice

1 Introduction

Trimble® 4D Control Server provides functionalities for specific monitoring operations such as instrument control, data collection, data processing, data analysis and alarming.

Trimble® 4D Control Server must first be installed on a server before **Trimble® 4D Control Web**, the web interface for users to visualize and analyze sensor data, can be installed.

Trimble® 4D Control Web and **Trimble® 4D Control Server** are usually installed on the same server computer. **Trimble® 4D Control Web** can also be installed on a separate **Web Server** computer if required.

We will use the term *Target Server Computer* to refer to the computer onto which you are installing **Trimble® 4D Control Server**.

1.1 Installation Prerequisites

When you run the installer, it will automatically check and install the following prerequisites for **Trimble® 4D Control Server** on the *Target Server Computer* at the start of the installation:

- Microsoft Visual C++ 2013 Redistributable.
- Microsoft .NET Framework 4.6.1.

1.1.1 Windows Updates and User Rights

Ensure that the latest Windows updates are installed on the *Target Server Computer* and that you have administrative rights.

1.1.2 Microsoft SQL Server

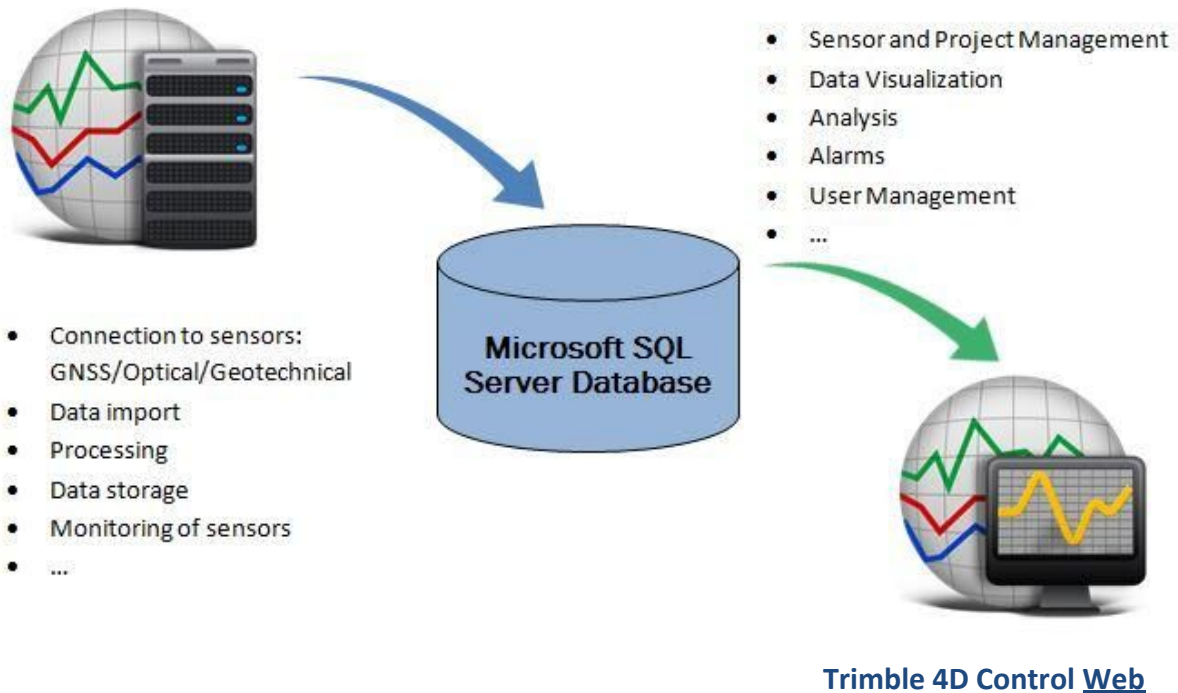
Trimble® 4D Control Server requires an instance of Microsoft SQL Server to be installed either on the *Target Server Computer* or a separate database server computer.

In the latter case make sure that SQL Server port 1433 is opened on the database server computer and that TCP/IP Network access is enabled on the SQL Server Instance.

Please also ensure that **Trimble® 4D Control Server** can connect to the database using Microsoft SQL Server authentication. In this regard it is required that the authentication mode is set to *Mixed Mode* at the Microsoft SQL Server.

1.2 General Overview

Trimble 4D Control Server



2 Installation Instructions

Below the steps to install **Trimble® 4D Control Server** are described:

- Execute the **Trimble® 4D Control Server** setup.exe file or launch it from the Installation DVD splash screen. If you are asked whether or not the program may be allowed to make changes to your computer then click on "Yes".

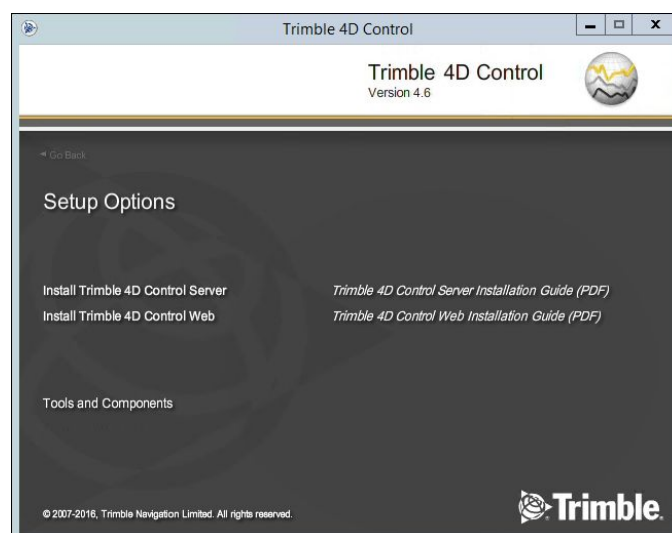


Figure 1: Installation DVD splash

- b. The Installer will verify the prerequisites and possibly prompt you to install Microsoft .NET Framework 4.6.1. The installation of Microsoft .NET Framework 4.6.1 may require a reboot. Just execute the **Trimble® 4D Control Server** setup.exe file or launch it from the Installation DVD splash screen again afterwards.
- c. Next you should see the installation wizard appear with a “Welcome” message.



Figure 2: Installation Welcome Step

- d. Accept the **license terms** and click “Next”:

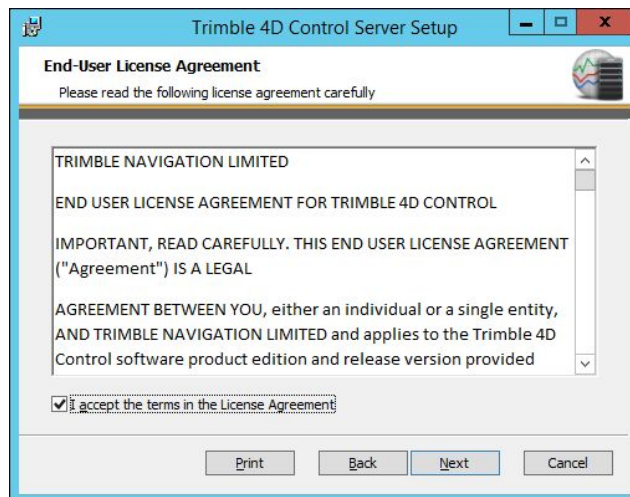


Figure 3: License Agreement

- e. The next page will prompt you to specify the location of the database server to be used by **Trimble® 4D Control Server**. Specify the server location and the SQL Server Administrator credentials.

Trimble® 4D Control Server will create the required databases and also create a SQL Server user to access these databases during runtime.

The SQL Server Administrator will only be used during the setup process and not during runtime of **Trimble® 4D Control Server**.

Once you have completed the required fields simply click on the “Test Connection” button and then click on the “Next” button.

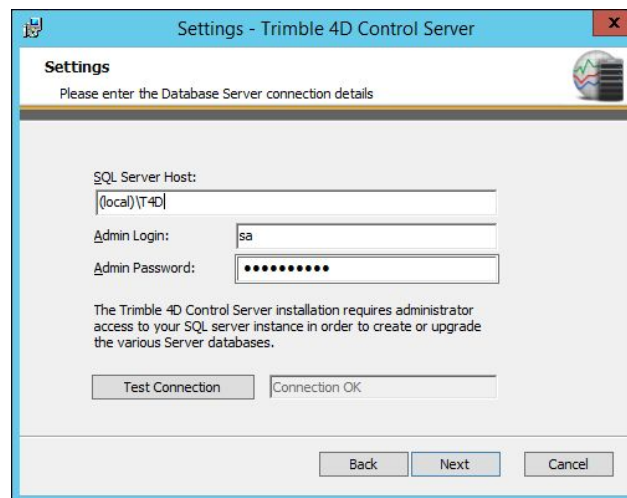


Figure 4: SQL Connection Details

- f. In the next step, you can change the location where **Trimble® 4D Control Server** should be installed. It is however recommended not to change this location. Click the “Next” button to proceed.

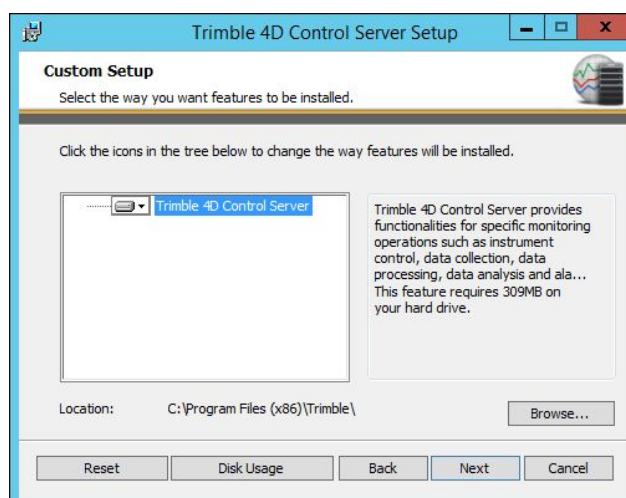


Figure 5: Installation Components and Location

- g. The installation now has enough information to continue and install the **Trimble® 4D Control Server** application. Click on the “Install” button and wait for the installation to complete.

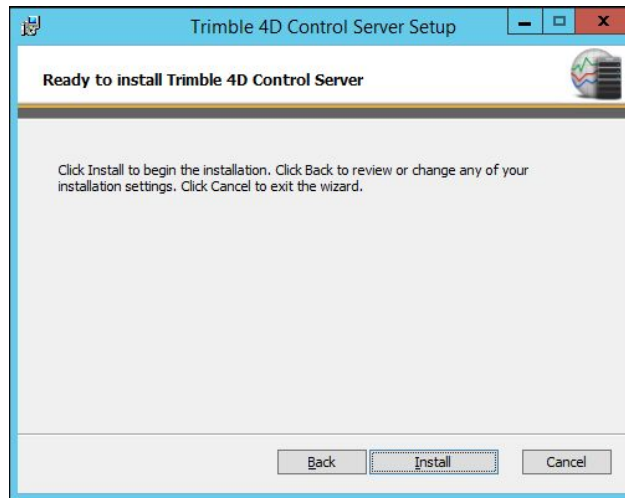


Figure 6: Click "Install" and wait for the installation to complete.

- h. Once the installation is completed click the “Finish” button to proceed to configure your installation.



Figure 7: Click "Finish" to proceed with configuration.

- i. After your installation has been configured you will be asked how to proceed. You can either continue with the **Trimble® 4D Control Web** installation on the same *Target Server Computer* or open the Trimble 4D Control Server UI to continue configuring your **Trimble® 4D Control Server** installation. Alternatively you can select “Do Nothing” to return the DVD splash.

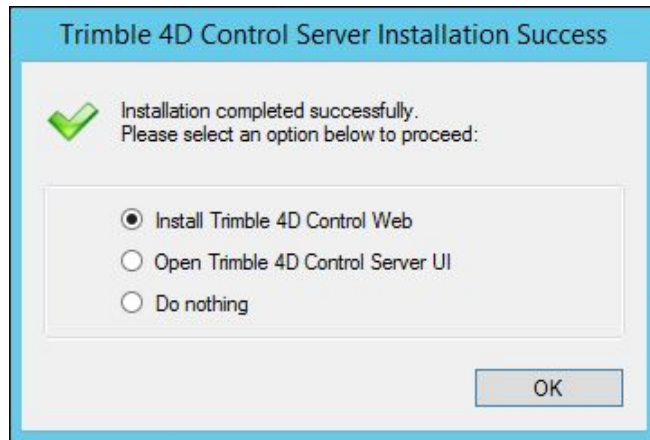


Figure 8: Installation completed successfully.

- j. If you chose to install **Trimble® 4D Control Web** please follow the relevant Trimble 4D Control Web Installation Guide (see [4 Further reading](#)).

3 Advanced Server Setup (optional)

For modifying your installation or adding advanced components to your installation you may follow the instructions below to run **Trimble 4D Control Server Setup** to access more advance server setup settings:

- a. Open the **Trimble® 4D Control Server Setup** from a shortcut found in your windows start menu. If you are asked whether or not the program may be allowed to make changes to your computer then click on “Yes”.
- b. The **Trimble® 4D Control Server Setup** wizard will show a page to setup advanced options for the Technical and Monitoring database. Be careful when changing these settings. It is not advised that you install the databases on difference SQL Server instances. If you switch existing databases from one SQL Server instance to another SQL Server instance, you will first need to physically move the databases from the one SQL Server instance to the other SQL Server instance before changing the configured database locations in **Trimble® 4D Control Server Setup**. Click “Next” to proceed.

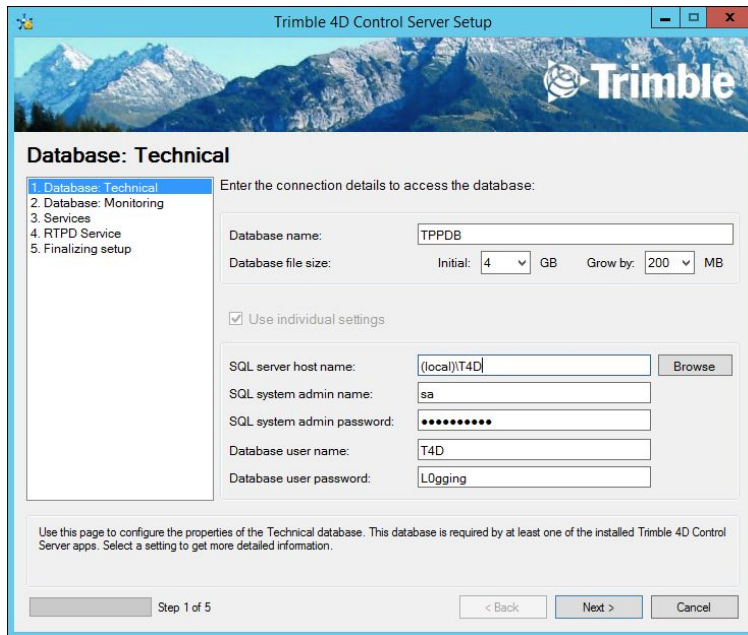


Figure 9: Advanced Database Setup

- c. The wizard page after advanced database setup will offer advanced options to setup the **Trimble® 4D Control Server** services. Click “Next” to proceed.

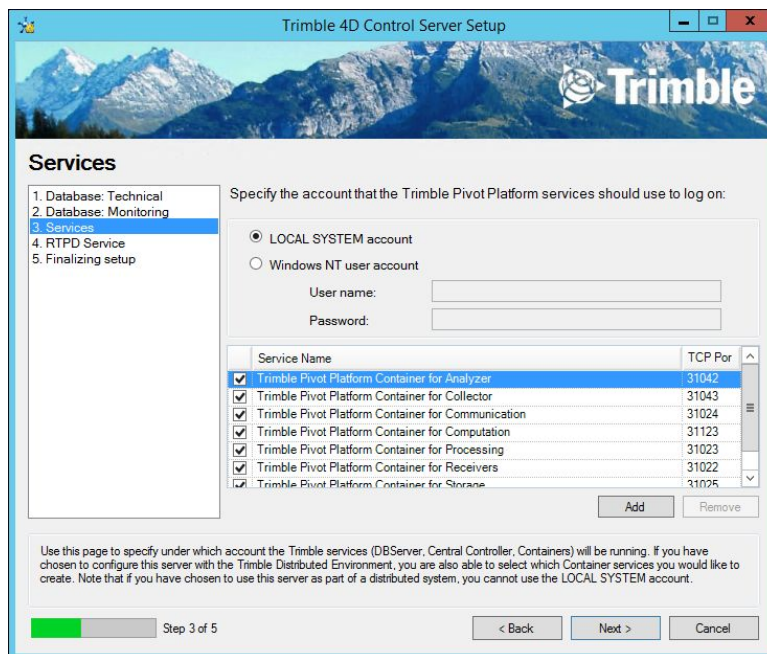


Figure 10: Advanced Services Setup

- d. The last wizard setup page offers you the option to enable an RTPD Service on the *Target Server Computer*. The RTPD Service is mainly used in connection with accelerometer and seismogeodetic data only. Click “Next” to proceed.

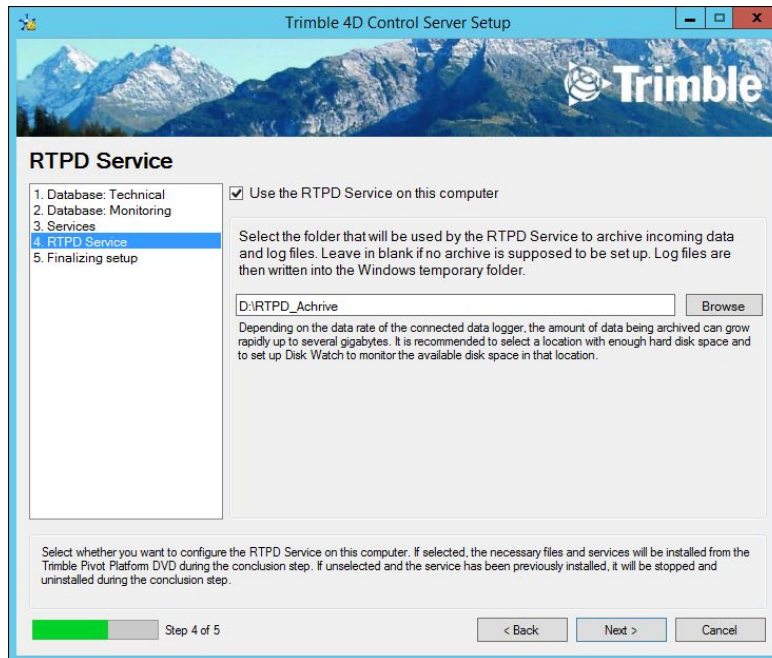


Figure 11: RTPD Service Setup

- e. Finally **Trimble® 4D Control Server Setup** will show you a list of actions and proceed to apply the setup configuration you specified in the preceding wizard setup pages.

4 Further reading

4.1 Trimble 4D Control Server

How to use Trimble 4D Control **Server**:
<http://help.web.t4d.trimble.com/version5.0/server>

4.2 Trimble 4D Control Web

How to install Trimble 4D Control **Web**:
<http://setup-guide.web.t4d.trimble.com/version5.0/web>

How to use Trimble 4D Control **Web**:
<http://help.web.t4d.trimble.com/version5.0/web>

Legal Notice

Corporate office

Trimble Inc.
935 Stewart Drive

Sunnyvale, CA 94085

USA

www.trimble.com

Copyright and trademarks

©2007-2019, Trimble Inc. All rights reserved.

Trimble and the Globe & Triangle logo are trademarks of Trimble Inc., registered in the United States and in other countries. Trimble 4D Control Server, Trimble Service Administrator, Trimble 4D Control, AutoLock, FineLock and Long Range FineLock, and Trimble Survey Controller are trademarks of Trimble Inc.. Microsoft, Excel, Windows, and SQL Server are either a registered trademark or a trademark of Microsoft Corporation in the United States and/or other countries. All other trademarks are the property of their respective owners.

Copyright 2005-2019 OpenLayers Contributors, released under the FreeBSD license. Please see the full text of the license at:
<http://svn.openlayers.org/trunk/openlayers/license.txt>

Release notice

This is the July 2019 release of the Trimble® 4D Control Server Installation Guide.

Product warranty information

For applicable product warranty information, please refer to the Warranty Card included with this Trimble product, or consult your Trimble dealer.